



Avalon
LUXURY PONTOON BOATS

2021 CATALOG | THE ART OF THE PONTOON

ADVENTURE I

Avalon is the only manufacturer who truly puts their products to the ultimate test! The Atlantic Ocean, the Pacific Ocean, the Gulf of Mexico, the Caribbean Sea, Lake Superior, Lake Michigan, the Mississippi... *need we say more?*



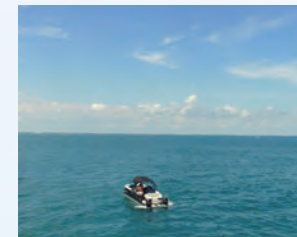
Baltimore to Key West - 2004



Key West to the Dry Tortugas - 2009



Los Angeles to Catalina Island to San Diego - 2014



Tampa to Cuba - 2017



Retracing the final voyage of the Edmund Fitzgerald on Lake Superior - 2018



Chicago to Mackinac Island - 2005



Ft. Lauderdale to Bimini Bahamas - 2006

Enjoy the details of all these great adventures at www.avalonpontoon.com



MORE THAN JUST A GREAT BOAT

- 2020 NMMA Innovation Award winner!
- 2019 Michigan Manufacturer of the Year!
- The only pontoon manufacturer to take multiple endurance trips across some of the most challenging waterways in the world!
- The FIRST ever pontoon boat to pace an offshore powerboat race. 2785 Excalibur ELW powered by Twin Mercury 450's - Official Pace Boat of Roar Offshore Powerboat Races, October 2019!
- The first winner of the NMMA Innovation award for an aluminum pontoon boat!
- A perennial winner of the NMMA CSI Award!
- One of the few privately owned pontoon boat manufacturers that knows and respects our customers and dealers!
- One of the largest vertically integrated boat manufacturing facilities in the world!

excellence
AWARDS



OFFICIAL PACE BOAT

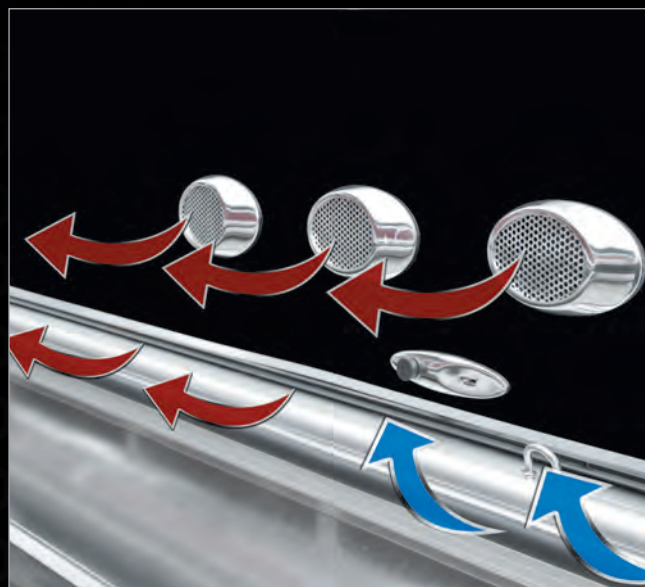


THE ART OF THE PONTOON | WWW.AVALONPONTOONS.COM



CONSTRUCTION |

Exclusive High-Quality Features



You won't have to deal with mildew or fungus with Avalon's exclusive Flo Thru Ventilation™ Seating. Unlike plastic seating, our exclusive aluminum seat frames have external and internal air flow that dries out the seat compartments while moving and even when the boat is stored!



Our exclusive aluminum seat frames have 30 percent more storage than conventional plastic seat frames. Try putting all this in plastic seat storage!



Easy to clean, beautiful external wall.



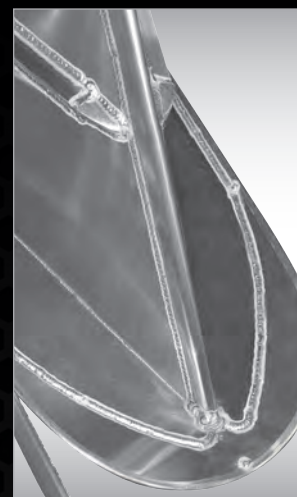
Docklights built into walls are protected from impact and are not a trip hazard! Nose cone tips covered by deck are less prone to damage and are less dangerous than exposed.



Exclusive side protector keel – protects pontoon from side impact at docks, provides a spray diversion and makes pontoon structure stronger.



One-piece nose cone has heavy-duty double-wrapped, double-thickness .200 leading edge.



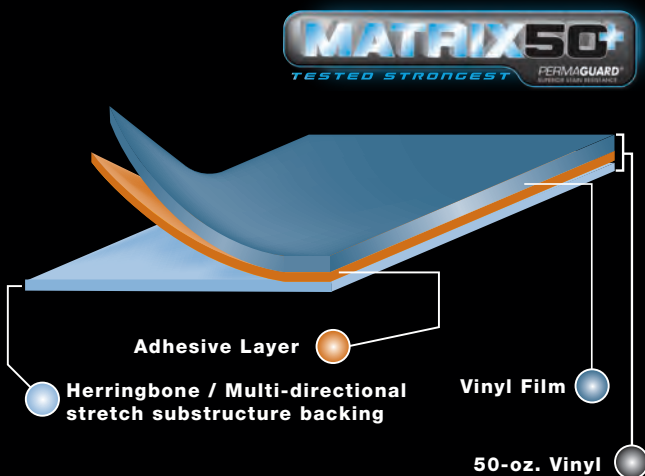
Integrated nose cone splash fins cannot be broken off! Fins have welded edge guard.



Avalon's unique suspension seat cushions provide soft comfortable cushions that don't bottom out on a hard support surface

Avalon's exclusive Matrix 50 heavy-duty 50 oz. marine seat covering with a 24 percent substructure is tested strongest against tears and punctures.

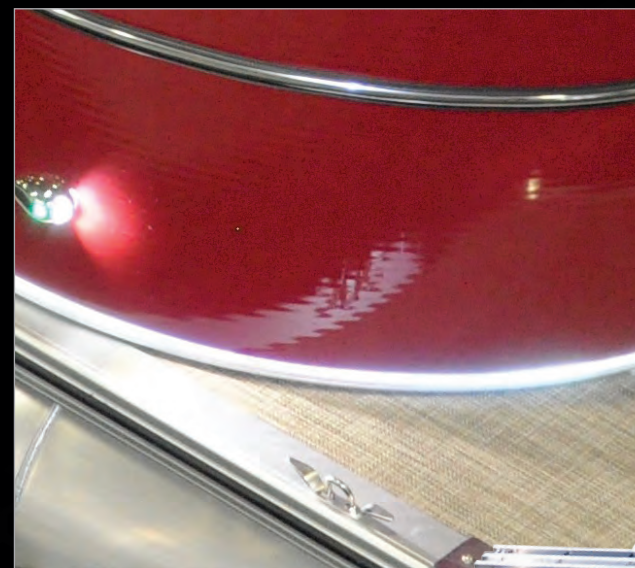
- New Herringbone multi-directional stretch backing promotes quicker recovery
- Greater stitch strength
- Permaguard stain protection



Heavy-duty, stylishly designed, seat frame cladding eliminates fabric covering and provides a vented, beautiful accent to Avalon's Deco designs



Heavy-duty rub rail with rubber bumper.



Reflective wall stripe makes boat easier to see at night.



Heavy-duty deck corner protection.

Solid frame includes double solid full risers and double bolted motor pod all connected with double bolted hat channel crossbeams plus bow and stern .250 U bars.



VERTICALLY INTEGRATED
90% of Boat is Made In-house



THE ART OF THE PONTOON | WWW.AVALONPONTOONS.COM



LIFETIME LIMITED*
TRANSFERABLE STRUCTURAL WARRANTY

For non-commercial use, single engine equipped boats
*(10 year limited nontransferable structural warranty for non-commercial use,
EXCLUDING TWIN ENGINE EQUIPPED BOATS)*

**LIFETIME WARRANTY INCLUDES: Pontoons, crossbeams, seat frames,
motor mounts, wood decking, and rail structure**

10 Year Limited* Transferable bow to stern warranty on
all other components on your boat

** Warranty applies to 2021 model boats. See dealer for full warranty information
including limitations and exclusions.*



A WORK OF ART FOR EVERY BUDGET

TABLE OF CONTENTS

MASTER COLLECTION

Excalibur

Elite Windshield	2
Rear Lounge Windshield	3
Quad Lounge Windshield	4

Catalina Platinum

Elite Windshield	6
Quad Lounge	7
Cruise	8
Entertainer	9
Entertainer Funship	10
Cruise Funship	11
Versatile Rear Bench	12
Rear Lounge	13
Rear J Lounge	14

SIGNATURE COLLECTION

Catalina

Elite	16
Cruise, Rear Lounge	17
Cruise Funship	18
Entertainer	19
Quad Lounge	20
Rear J Lounge	21
Versatile Rear Bench	22
Versatile Rear Lounge	23
Quad Fish, Rear Fish	24

LSZ

Cruise	26
Cruise Rear Bench	27
Cruise II	28
Quad Lounge	29
Rear Lounge	30
Entertainer	31
Elite, Elite Windshield	32 - 33
Versatile Rear Lounge	34
Versatile Rear Bench	35
Rear Fish	36

GS

Cruise	38
Cruise II	39
Quad Lounge	40
Elite Windshield	41
Center Console Fish	42
Quad Fish	43
Rear Fish	44

BOUTIQUE COLLECTION

Venture

Cruise	46
Cruise Rear Bench	47
Quad Lounge	48
Fish-N-Cruise	49
Cruise Bow Fish	50
Bow Fish	51
Quad Fish, Rear Fish	52

VLS

Quad Lounge	54
-------------------	----

VTX

Cruise	55
Quad Fish	56

GALLERY OF FEATURES & OPTIONS

Features & Options	58 - 65
Performance & Watersports	66
Twin Engine Option	67
Color Options	68 - 69

More models may be available. Please review line drawings for all available models.



EXCALIBUR | Elite Windshield



EXCALIBUR | Rear Lounge Windshield



2785 RLW



THE ART OF THE PONTOON | WWW.AVALONPONTOONS.COM

EXCALIBUR | Quad Lounge Windshield



2585 QLW





STANDARD FEATURES & SPECIFICATIONS

HELM

- Dual Commander Fiberglass Helmstands with Full Windshield, Upholstered automotive style stitched trim, & Black Pearlwood dash panel.
- Touchscreen Dash with detailed information Center, light controls, & High Power Stereo.
- GPS Garmin 742XS
- Multi location USB Charging Ports
- Excalibur GT Sound Package, Medallion Touch screen stereo (6) CL-655 Lighted RGB Speakers & Grills, Fusion 6-Channel Amp, USB Audio Input and Charge
- 2 - 12 Volt Power Points
- Steering - Seastar Hydraulic Tilt
- Mazzo Steering Wheel w/ Heavy Duty Chrome spokes
- Courtesy Light on Helmstand

INTERIOR

- Admiral High Back Reclining Drivers Chair with Remote levers, Self-leveling Arms & Color-matched accents
- Chair Adjustment Slider, Front, Back, Rotate
- Adjustable Height Seat Pedestal
- Finished interior wall panels
- Full Timber / Driftwood vinyl flooring
- Large Greywood Rectangle table
- Trash Can - large - Built in
- Lifetime Aluminum Seat Frames w/ Flow-Through Ventilation
- Seat Frame Floor Matting
- Exclusive Matrix 50 ULTRAFINE Touch, Primary Seat Vinyl
- Deluxe Seat Frame Cladding w/ SST Inserts
- 2 Deco Moveable Stainless Cup Holders Armrest
- Suspension Seating
- Privacy Station Curtain and Frame (RL-W ONLY)
- RGB Interior Mood Lighting
- RGB Lighted Cup Holders
- Battery Dual Smart Switch System

EXTERIOR

- GX solid welded aluminum painted walls with Fore & Aft Fiberglass Accents
- Large High Flex Bold Chrome Logos
- Top Bimini with Heavy Duty Black aluminum D Frame, SST Quick Release Bimini Mounts & Transport Brackets
- Heavy Duty Gates w/ Logo Panel
- USCG Navigation Lights
- RGB Exterior built Sport Docklights & Rub rail lights
- RGB Rear Underwater lights
- Rear Stainless Steel telescoping Ladder
- Ski Tow Bar
- Quick Release Fender Holders w/Straps
- Full Mooring Cover - Color-matched

HULL

- Waveglider Triple 27" Pontoons with High Performance Lifting Fins & Aluminum Waveshield
- Keels Side Protector
- Heavy duty Deck Corner impact protection - Stainless steel
- Tapered Front Deck
- Extended Rear Deck
- Pontoon Double Full Risers
- 3" Rub Rail with Black Rubber Insert
- 4 Stainless Steel Pull-up Cleats
- Bolted Deck

FUEL

- Fuel 58 Gallon Remote Fill in Center Pontoon
- SST Gas Cap & Vent

2785

EL-W



QL-W



RL-W



EL-WPC



EXCALIBUR/GRAND TAHOE 2785 ELITE WINDSHIELD - PORT CHAI

2585



EXCALIBUR/GRAND TAHOE 2585 ELITE WINDSHIELD - PORT CHAI

EXCALIBUR	Length Class	Boat Length Overall	Deck Length	Pontoon Diameter	Width	Dry Weight	Max Weight Capacity	Max Persons Pounds	Max Number Persons	Max Engine HP
2585 X 3 27" WG	25	26'6"	25'3"	27" x 3	8.5'	4600	2900	1950	14	350
2785 x 3 27" WG	27	28'6"	27'3"	27" x 3	8.5'	5000	3160	2345	16	450



CATALINA PLATINUM | Elite Windshield



2585 ELW (Shown with Optional Deco Sport Arch)



2585 ELW (Shown with Optional Deco Sport Arch)

Boats shown may show optional equipment.

CATALINA PLATINUM | Quad Lounge



2585 QL



2585 QL



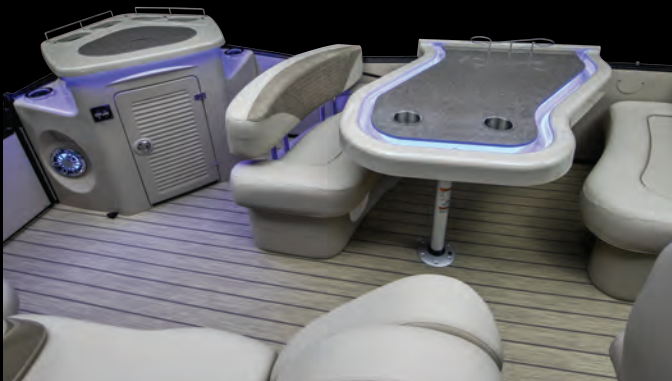
CATALINA PLATINUM | Cruise



2385 CR

Boats shown may show optional equipment.

CATALINA PLATINUM | Entertainer



2585 ENT



CATALINA PLATINUM | Cruise Funship



2785 CR FS (Shown with Optional Deco Uprights)

Boats shown may show optional equipment.

CATALINA PLATINUM | Entertainer Funship



2785 ENT FS (Shown with Optional Deco Uprights)



2785 ENT FS



CATALINA PLATINUM | Versatile Rear Bench



Boats shown may show optional equipment.

CATALINA PLATINUM | Rear Lounge



CATALINA PLATINUM | Rear J Lounge





STANDARD FEATURES & SPECIFICATIONS

HELM

- Ensign II Fiberglass helmstand with soft touch Black Recessed dash & Greywood Accents & Removeable Windshield (EXCEPT ELW)
- Dual Commander Fiberglass Helmstands with Full Windshield, Upholstered automotive style stitched trim, Black pearlwood analog dash panel, & glove box (ELW only)
- Tach, Volt, Fuel Gauges
- GPS Speedometer
- Garmin 5 CV Color Fishfinder / Depth Finder (EXCEPT ELW)
- GPS Garmin 73CV (ELW Only)
- Multi location USB Charging Ports
- Gold Plus sound Package, Fusion RA-670 Radio, (6) Fusion XS Speakers & Grills, Fusion 5-Channel Amp, USB Audio Input and Charge
- LED Lighted Blue Speakers
- Steering - Mechanical Tilt (EXCEPT ELW, CRFS & ENTFS)
- Steering - Seastar Hydraulic Tilt (CRFS, ENTFS, & ELW ONLY)
- Mazzo Steering Wheel with Black Pearlwood
- Courtesy Light on Helmstand

INTERIOR

- Admiral High Back Reclining Drivers Chair with Remote levers, Self-leveling Arms & Color-matched accents
- Chair Adjustment Slider, Front, Back, Rotate
- Adjustable Height Seat Pedestal - ELW Only
- Interior Composite Wall Panels

- Natural or Slate Teak Vinyl Rear Deck with Deco Carpet on Remainder
- Curved heavy duty Greywood Table w large cup holders, recessed tray, & phone storage (CR, CRFS, ELW)
- Rectangle heavy duty Greywood Table w large cup holders, recessed tray, & phone storage (ENT, ENTFS, QL, RL, RJ, VRB)
- Trash Can - large - Built in to lounge arm (where Possible)
- Lifetime Aluminum Seat Frames w/ Flow-Through Ventilation
- Seat Frame Floor Matting
- Exclusive Matrix 50 ULTRAFINE Touch, Primary Seat Vinyl
- Deluxe Seat Frame Cladding W/ SST Vents
- Interior Mood Lighting & Lighted Cup Holders
- 2 Deco Moveable Stainless Cup Holders Armrest
- Suspension Seating
- Lounge Arms with Storage (based on floorplans)
- Privacy Station Curtain and Frame (N/A on 23' RJ)
- Battery Dual Smart Switch (CRFS & ENTFS ONLY)

EXTERIOR

- Deco 2 External smooth multi panel retro two tone walls
- Large High Flex Bold Chrome Logos
- Top Bimini with Heavy Duty aluminum D Frame, SST Quick Release Bimini Mounts & Transport Brackets (EXCEPT CRFS & ENTFS)

- DECO Built in Docklights
- USCG Navigation Lights
- Gates w/ Lift n Lay with SST EZ Lift Latch
- Rear Stainless Steel telescoping Ladder
- Quick Release Fender Holders w/Straps
- Full Mooring Cover - Color-matched

HULL

- 2 - 25" Diameter Pontoons (Except ELW, CRFS, ENTFS)
- Waveglider Triple 25" Pontoons with High Performance Lifting Fins, Ski tow bar & Aluminum Waveshield (ELW ONLY)
- Waveglider Triple 27" Pontoons with High Performance Lifting Fins, ski tow bar, & Aluminum Waveshield (CRFS & ENTFS ONLY)
- Keels Side Protector
- Heavy duty Deck Corner impact protection -Polished Aluminum
- Tapered Front Deck
- Extended Rear Deck
- Pontoon Double Full Risers
- 3" Rub Rail with Black Rubber Insert
- 4 Stainless Steel Pull-up Cleats
- Bolted Deck
- 25" Transom (CRFS & ENTFS ONLY)

FUEL

- 25 Gallon transom (32 Gal. under sundeck on CR)
- 58 Gal. Remote - Center Pontoon (CRFS, ENTFS, ELW)
- SST Gas Cap & Vent

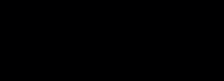
CATALINA PLATINUM	Length Class	Boat Length Overall	Deck Length	Pontoon Diameter	Width	Dry Weight	Max Weight Capacity	Max Persons Pounds	Max Number Persons	Max Engine HP
2385 25"	23	23' 5"	23' 3"	25"	8.5'	2150	2150	1540	11	125
2385 25" SP	23	24' 6"	23' 3"	25" x 3	8.5'	2800	2582	1768	12	200
2385 25" WG	23	24' 6"	23' 3"	25" x 3	8.5'	2900	2560	1600	12	250
2385 27" WG	23	24' 6"	23' 3"	27" x 3	8.5'	3050	2980	1890	13	250
2585 25"	25	25' 5"	25' 3"	25"	8.5'	2450	2430	1770	13	135
2585 25" SP	25	26' 6"	25' 3"	25" x 3	8.5'	3000	2875	2060	14	200
2585 25" WG	25	26' 6"	25' 3"	25" x 3	8.5'	3100	2825	2015	14	250
2585 27" WG	25	26' 6"	25' 3"	27" x 3	8.5'	3200	3270	2460	17	350
2785 25"	27	27' 5"	27' 3"	25"	8.5'	2650	2675	2015	14	150
2785 25" SP	27	28' 6"	27' 3"	25" x 3	8.5'	3125	3200	2390	17	200
2785 25" WG	27	28' 6"	27' 3"	25" x 3	8.5'	3300	3120	2310	16	300
2785 27" WG	27	28' 6"	27' 3"	27" x 3	8.5'	3400	3575	2760	19	450
CATALINA PLATINUM FUNSHIP	Length Class	Boat Length Overall	Deck Length	Pontoon Diameter	Width	Dry Weight	Max Weight Capacity	Max Persons Pounds	Max Number Persons	Max Engine HP
2585 27" WG	25	26'6"	25'3"	27" x 3	8.5'	4200	3070	2000	14	250
2785 27" WG	27	28'6"	27'3"	27" x 3	8.5'	4485	3320	2370	17	250

2785

2585

2385

CR



EL-W



QL



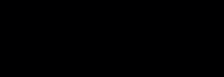
RL



RJ



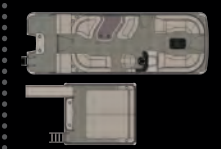
VRB



ENT



ENTFS



CRFS



CATALINA | Elite



2385 EL



2385 EL

Boats shown may show optional equipment.

CATALINA | Cruise & Rear Lounge



2385 CR



2585 RL

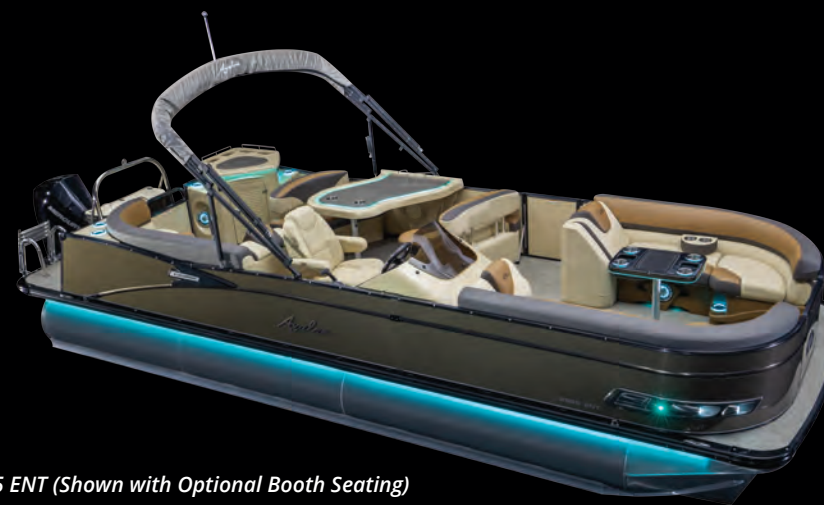


CATALINA | Cruise Funship



2585 CRFS

Boats shown may show optional equipment.



2585 ENT (Shown with Optional Booth Seating)



CATALINA | Quad Lounge



2385 QL (Shown with Optional Blackout Package & Deco Docklights)



2385 QL (Shown with Optional Blackout Package & Deco Docklights)



Boats shown may show optional equipment.

CATALINA | Rear J Lounge



2585 RJ



THE ART OF THE PONTOON | WWW.AVALONPONTOONS.COM

CATALINA | Versatile Rear Bench



2385 VRB (Shown with Optional Gated Aft, Patio Pad, & Lillipad Diving Board)



2385 VRB (Shown with Optional Gated Aft, Patio Pad, & Lillipad Diving Board)

Boats shown may show optional equipment.

CATALINA | Versatile Rear Lounge



2585 VRL (Shown with Optional Deco Docklights & Deco Sport Arch)



CATALINA | Quad Fish & Rear Fish



2385 QF (Shown with Optional Fishing Chairs Upgrade)

Model#



2385 RF (Shown with Optional Fishing Chairs Upgrade)



Boats shown may show optional equipment.



STANDARD FEATURES & SPECIFICATIONS

HELM

- Ensign II Fiberglass helmstand with soft touch Designer dash panel, & Removeable Windshield
- Tach, Volt, Fuel Gauges
- GPS Speedometer
- 12 Volt Power Point
- Gold Sound Package, Fusion RA-670 Radio, (4) Fusion XS Speakers, (4) Fusion XS Speaker Grills, USB Audio Input and Charge
- Gold Plus sound Package, Fusion RA-670 Radio, (6) Fusion XS LED Lighted blue Speakers & Grills, Fusion 5-Channel Amp, USB Audio Input and Charge, (Only on VRL, VRB)
- Multi location USB Charging Ports
- Steering - Mechanical Tilt (Except CRFS)
- Steering - Baystar Hydraulic Tilt (CRFS ONLY)
- Black Soft-grip Steering Wheel with Chrome Spokes
- Courtesy Light on Helmstand

INTERIOR

- Commander Low Back Reclining Drivers Chair with Self-leveling Arms
- Chair Adjustment Slider, Front, Back, Rotate
- Interior Composite Wall Panels (EXCEPT QF & RF)
- Riptide, (Shadow or Dune) Vinyl Rear Deck with Deco Carpet on Remainder

- Curved heavy duty Greywood Table with large cup holders, recessed tray, & phone storage (CR, CRFS, EL, QF, RF)
- Rectangle heavy duty Greywood Table with large cup holders, recessed tray, & phone storage (ENT, QL, RJ, RL, VRB & VRL)
- Lifetime Aluminum Seat Frames w/ Flow-Through Ventilation
- Seat Frame Floor Matting
- Plush Designer furnishings using Matrix 50 Primary Seat Vinyl
- Deluxe Seat Frame Cladding
- 2 Moveable Stainless Cup Holders
- Suspension Seating
- Lounge Arms with Storage (based on floorplans)
- Privacy Station Curtain and Frame (N/A 21' QL & 23' RJ)
- Vinyl Non-skid Strips for Entry Gates

EXTERIOR

- Deco 3 External Smooth retro monochromatic walls
- Bimini Top with 1 1/4" Square Anodized Aluminum Frame SST Quick Release Bimini Mounts & Transport Position Brackets (Except CRFS)
- Exterior Nav/Docklight Combo
- High Flex Bold Chrome Logos
- Gates w/ Lift n Lay with SST EZ Lift Latch
- Rear Stainless Steel telescoping Ladder

FISHING

- Garmin Striker 5CV Color Fishfinder / Depth Finder (QF & RF ONLY)
- Livewell in Front of Captain Stand (QF ONLY)
- Rear Fishing Center with Rod holders & Livewell (QF & RF ONLY)
- Tackle Trays with Rear Sink & Access Door (QF & RF ONLY)

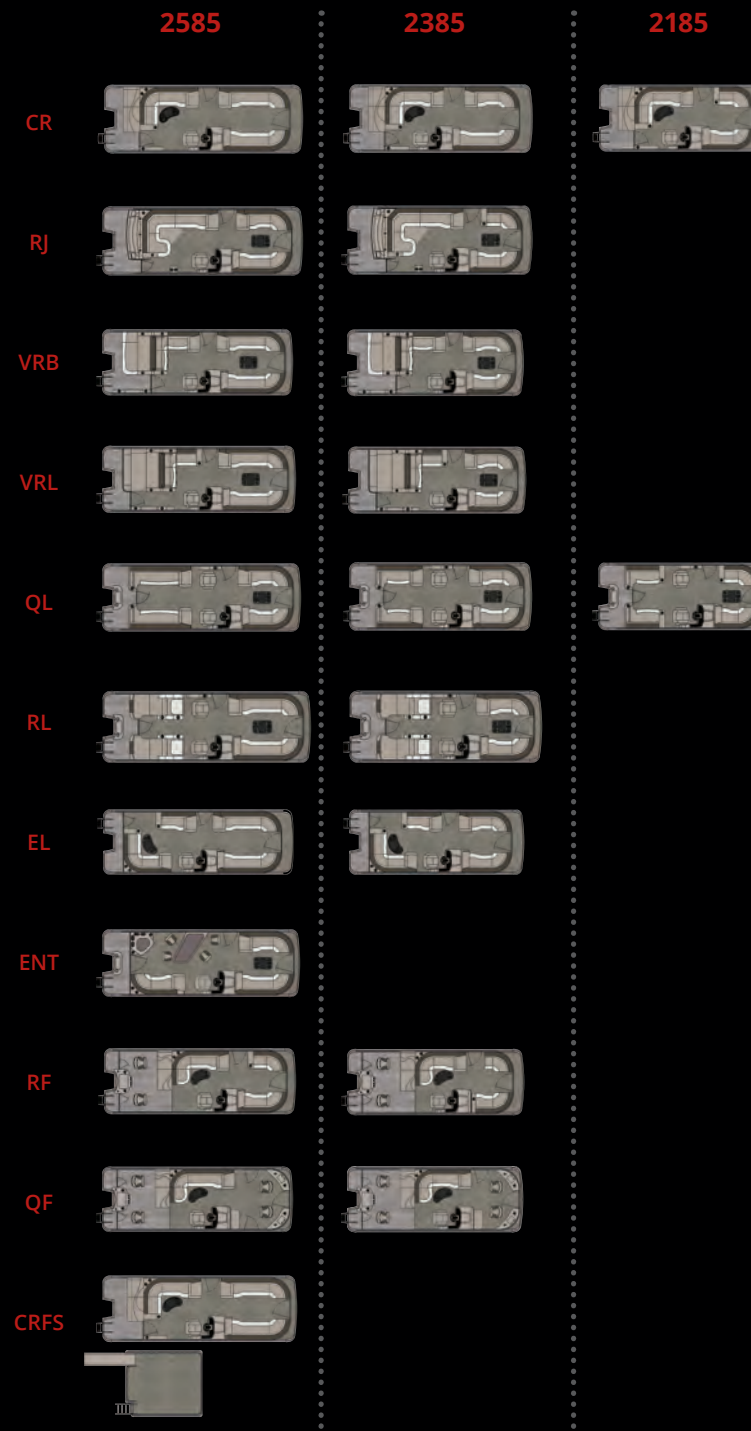
HULL

- 2 - 25" Diameter Pontoons (Except CRFS)
- 2 - 27" Diameter Pontoons - Lifting fins on both pontoons (CRFS only)
- Heavy duty Deck Corner impact protection -Polished Aluminum
- Tapered Front Deck
- Extended Rear Deck
- Pontoon Double Full Risers
- 3" Rub Rail with Black Rubber Insert
- 4 Stainless U bolt & Cleat Combo
- 25" Transom (CRFS ONLY)

FUEL

- 25 Gallon transom
- 32 Gal. under sundeck on (CR & CRFS)
- SST Gas Cap & Vent

CATALINA	Length Class	Boat Length Overall	Deck Length	Pontoon Diameter	Width	Dry Weight	Max Weight Capacity	Max Persons Pounds	Max Number Persons	Max Engine HP
2185 25"	21	21' 5"	21' 3"	25"	8.5'	1850	2035	1300	10	115
2185 25" EP	21	21' 5"	21' 3"	25" x 3	8.5'	2040	2035	1300	10	115
2185 25" SP	21	22' 6"	21' 3"	25" x 3	8.5'	2750	2240	1300	10	175
2185 25" WG	21	22' 6"	21' 3"	25" x 3	8.5'	2750	2240	1300	10	175
2385 25"	23	23' 5"	23' 3"	25"	8.5'	2150	2150	1540	11	125
2385 25" EP	23	23' 5"	23' 3"	25" x 3	8.5'	2450	2150	1540	11	115
2385 25" SP	23	24' 6"	23' 3"	25" x 3	8.5'	2800	2582	1768	12	200
2385 25" WG	23	24' 6"	23' 3"	25" x 3	8.5'	2900	2560	1600	12	250
2385 27" WG	23	24' 6"	23' 3"	27" x 3	8.5'	3050	2980	1890	13	250
2585 25"	25	25' 5"	25' 3"	25"	8.5'	2450	2430	1770	13	135
2585 25" EP	25	25' 5"	25' 3"	25" x 3	8.5'	2650	2650	1790	13	115
2585 25" SP	25	26' 6"	25' 3"	25" x 3	8.5'	3000	2875	2060	14	200
2585 25" WG	25	26' 6"	25' 3"	25" x 3	8.5'	3100	2825	2015	14	250
2585 27" WG	25	26' 6"	25' 3"	27" x 3	8.5'	3200	3270	2460	17	350
CATALINA FUNSHIP	Length Class	Boast Length Overall	Deck Length	Pontoon Diameter	Width	Dry Weight	Max Weight Capacity	Max Persons Pounds	Max Number Persons	Max Engine HP
2585 27" - 2	25	25' 5"	25' 3"	27"	8.5'	3300	2590	1830	12	150



LSZ | Cruise



2285 CR

Boats shown may show optional equipment.



LSZ | Cruise II



2285 CR II



(Shown with Optional Smart 80 Touchscreen)

LSZ | Quad Lounge



2485 QL (Shown with Optional 4000 Series Furniture)



LSZ | Rear Lounge



Boats shown may show optional equipment.



2485 ENT (Shown with Optional Sport Highback Recliner)



LSZ | Elite & Elite Windshield



2285 EL





2485 ELW (Shown with Optional 4000 Series Furniture)



LSZ | Versatile Rear Lounge



2485 VRL



VRL Bench



VRB Bench



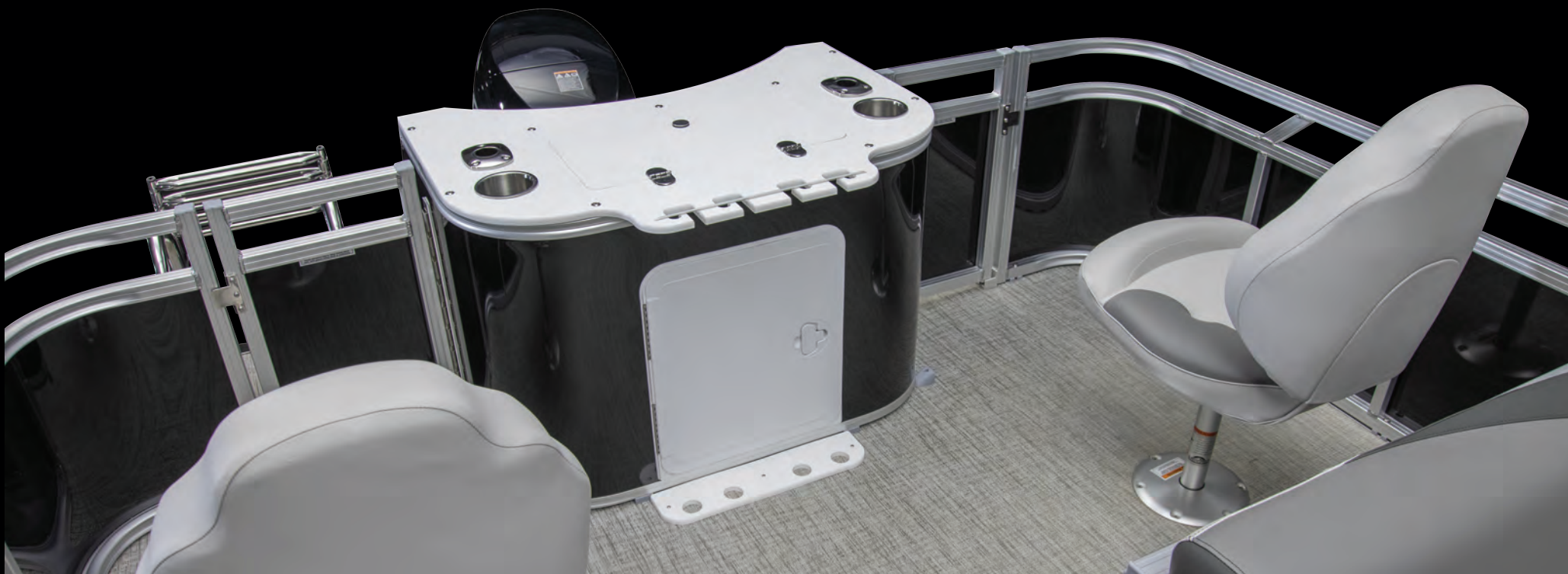
2485 VRB



LSZ | Rear Fish



Model#
2285 RF





STANDARD FEATURES & SPECIFICATIONS

HELM

- Crew Roto Helmstand with large dash & side storage
- Dual Cadet Fiberglass helmstands with full windshield & greywood dash panels (Standard on ELW only)
- Tach, Volt, Fuel Gauges
- 12 Volt Power Point
- Silver Sound Package Fusion RA-210 Radio (4) Fusion EL Speakers (4) Fusion EL Speaker Grills, USB Audio Input & Charge
- Silver Plus Sound Package (VRL/VRB) - (6) Fusion EL Speakers & Grills, Fusion 4-Channel Amp, USB Audio Input and Charge
- Steering - Mechanical Tilt
- Steering - Seastar Hydraulic Tilt (ELW ONLY)
- Black Soft-grip Steering Wheel
- Removeable Windshield (except ELW)
- Courtesy Light on Helmstand

INTERIOR

- Sport Low Back Drivers Chair with Arms
- Chair Adjustment Slider, Front, Back, Rotate
- Riptide, (Shadow or Dune) Vinyl Rear Deck with Deco Carpet on Remainder

- Stainless Steel Cup Holders
- Greywood Large Kidney Thermoform Table (CR, CRB, EL, RF, ELW only)
- Rectangle heavy duty Greywood Table w/large cup holders, recessed tray, & phone storage (CR2, RL, VRB, VRL, QL, ENT)
- Cooler 20 QT Insulated w/ Logo (ELW ONLY)
- USB Charging Port
- Lifetime Aluminum Seat Frames w/ Flow-Through Ventilation
- Custom designed furnishings using Matrix 50 Primary Seat Vinyl
- Deluxe Seat Frame Cladding
- Suspension Seating
- Lounge Arms with Storage (based on floorplans)
- Vinyl Non-skid Strips for Entry Gates

EXTERIOR

- Deco 4 External multi panel smooth walls
- Bimini Top with 1 1/4" Square Anodized Aluminum Frame SST Quick Release Bimini Mounts & Transport Position Brackets
- USCG Navigation Lights
- Mirror Chrome Logos
- Gates w/ Lift n Lay hinge

- Rear Stainless Steel telescoping Ladder

REAR FISH

- Rear Fishing Center with 2 fishing chairs, Rod Holders & Livewell

HULL

- 2 - 25" Diameter Pontoons
- Sport Performance pkg 25" - Max 200 HP (ELW ONLY)
- Deck Corner impact protection - Aluminum
- Tapered Front Deck
- Extended Rear Deck
- Pontoon Double Full Risers
- 3" Rub Rail with Black Rubber Insert
- 4 Stainless U bolt & Cleat Combo

FUEL

- 25 Gallon direct fill transom
- 24 Gallon remote under sundeck (CR ONLY)
- Fuel 38 Gallon Direct Fill in Center Pontoon (ELW Only)
- SST Gas Cap & Vent (CR Only)

LSZ	Length Class	Boat Length Overall	Deck Length	Pontoon Diameter	Width	Dry Weight	Max Weight Capacity	Max Persons Pounds	Max Number Persons	Max Engine HP
2085 25"	20	19' 5"	19' 3"	25"	8.5'	1650	1835	1475	10	90
2085 X 3 25" EP	20	19' 5"	19' 3"	25" x 3	8.5'	2000	1750	1225	9	90
2085 X 3 25" SP	20	20' 6"	19' 3"	25" x 3	8.5'	1950	2100	1440	10	115
2085 X 3 25" WG	20	20' 6"	19' 3"	25" x 3	8.5'	1950	2100	1440	10	115
2285 25"	22	21' 5"	21' 3"	25"	8.5'	1800	2035	1380	10	115
2285 X 3 25" EP	22	21' 5"	21' 3"	25" x 3	8.5'	2030	2035	1380	10	115
2285 X 3 25" SP	22	22' 6"	21' 3"	25" x 3	8.5'	2200	2370	1710	12	175
2285 X 3 25" WG	22	22' 6"	21' 3"	25" x 3	8.5'	2200	2370	1710	12	175
2285 X 3 27" WG	22	22' 6"	21' 3"	27" x 3	8.5'	2400	2700	2020	14	175
2485 25"	24	23' 5"	23' 3"	25"	8.5'	2050	2260	1600	11	125
2485 X 3 25" EP	24	23' 5"	23' 3"	25" x 3	8.5'	2250	2260	1600	11	115
2485 X 3 25" SP	24	24' 6"	23' 3"	25" x 3	8.5'	2800	2582	1768	12	200
2485 X 3 25" WG	24	24' 6"	23' 3"	25" x 3	8.5'	2800	2580	1780	12	250
2485 X 3 27" WG	24	24' 6"	23' 3"	27" x 3	8.5'	2950	2915	2255	16	250
2685 25"	26	25' 5"	25' 3"	25"	8.5'	2250	2550	2020	14	150
2685 X 3 25" EP	26	25' 5"	25' 3"	25" x 3	8.5'	2470	2505	1845	13	115
2685 X 3 25" SP	26	26' 6"	25' 3"	25" x 3	8.5'	3000	2877	2063	14	200
2685 X 3 25" WG	26	26' 6"	25' 3"	25" x 3	8.5'	3000	2875	2060	14	275
2685 X 3 27" WG	26	26' 6"	25' 3"	27" x 3	8.5'	3100	3305	2495	18	300

	2685	2485	2285	2085
CR				
CR II				
CRB				
VRB				
VRL				
EL				
EL-W				
QL				
RL				
ENT				
RF				





2185 CR

Boats shown may show optional equipment.



GS | Quad Lounge



2385 QL (Shown with Optional 2000 Series Furniture)



2385 ELW



GS | Center Console Fish



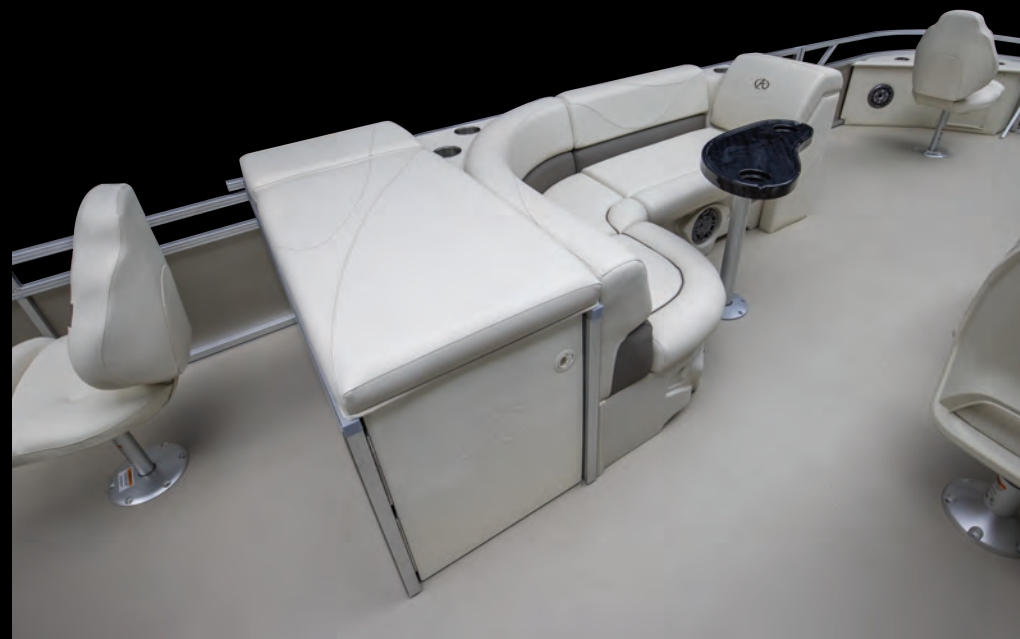
2385 CCF (Shown with Optional
Main Chair & Fishing Chairs Upgrade)



Boats shown may show optional equipment.



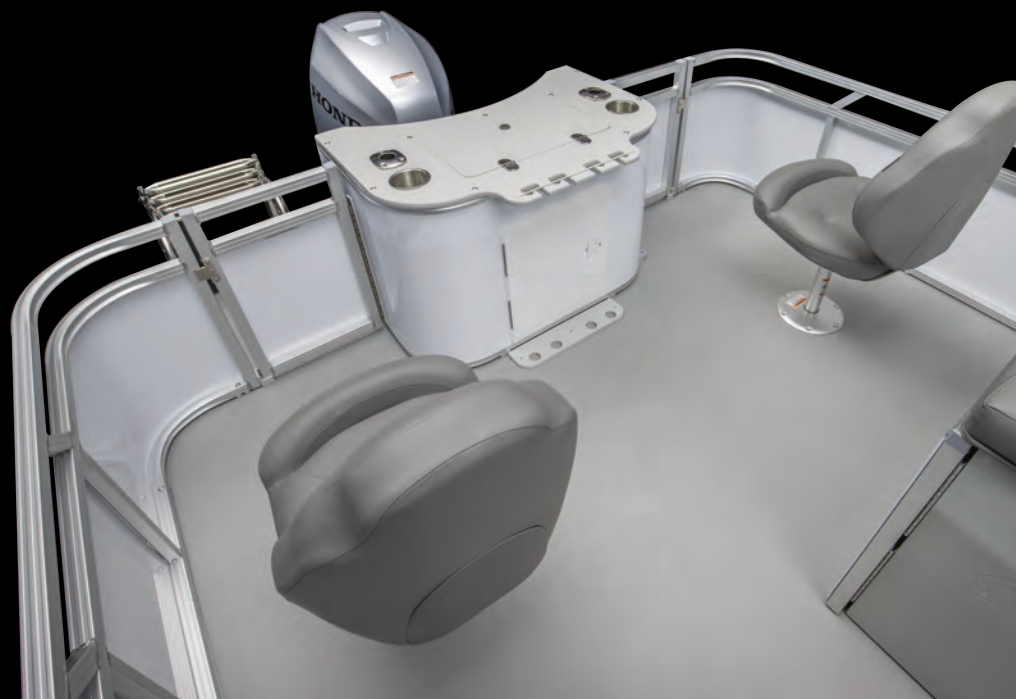
2385 QF



GS | Rear Fish



2585 RF



2585 RF

Boats shown may show optional equipment.



STANDARD FEATURES & SPECIFICATIONS

HELM

- Cadet 2 Roto Helmstand
- Dual Cadet Rotocast helmstands with Twin Windscreens & greywood dash panels (Standard on ELW only)
- Center Console Fiberglass Helmstand with Greywood Dash Panels (CCF Only)
- Tach, Volt, Fuel Gauges
- 12 Volt Power Point
- Bronze Lite Sound Package, Fusion RA-55 Radio, (2) Fusion EL Speakers, (2) Fusion EL Speaker Grills
- Steering - Mechanical Standard (no tilt) (Except CCF)
- Steering - Baystar Hydraulic Tilt (Std on CCF Only)
- Viper Steering Wheel
- Removeable Windshield (except ELW)
- Courtesy Light on Helmstand

INTERIOR

- Sport Low Back Drivers Chair
- Chair Adjustment Slider, Front, Back, Rotate
- Riptide, (Shadow or Dune) Vinyl Rear Deck with Deco Carpet on Remainder
- USB Charging Ports
- Stainless Steel Cup Holders
- Lifetime Aluminum Seat Frames w/ Flow-Through Ventilation
- Matrix 50 Primary Seat Vinyl
- Seat Frame Cladding color matched to primary seat vinyl
- Suspension Seating
- Lounge Arms with Storage (based on floorplans)
- Vinyl Non-skid Strips for Entry Gates

EXTERIOR

- .040 Traditional External Lock Stripped Smooth Wall panels
- Bimini Top with 1 1/4" Square Anodized Aluminum Frame SST Quick Release Bimini Mounts & Transport Position Brackets
- USCG Navigation Lights
- Flat Graphic Logos
- Gates w/ Lift n Lay hinge
- Rear Stainless Telescoping Ladder (QF, RF, & CCF Only)
- Rear Aluminum Ladder (Except QF, RF & CCF)

FISHING

- Garmin Striker 5CV Color Fishfinder / Depth Finder (Std on CCF Only)
- Rear Fishing Center with Rod Holders & Livewell (QF, RF, & CCF)
- Rod Box (Std on CCF Only)
- Tackle Trays with Rear Sink & Access Door (Std on 25' CCF Only)

HULL

- 2 - 23" Diameter Pontoons (19' only)
- 2 - 25" Diameter Pontoons (Except 19')
- 25" Express tube with High Performance Lifting Fins & Aluminum Waveshield (Std on CCF Only)
- Deck Corner impact protection -Aluminum
- Tapered Front Deck
- Extended Rear Deck (QF, RF, & CCF Only)
- Pontoon Double Full Risers
- 3" Rub Rail with Black Rubber Insert
- 4 Stainless U bolt & Cleat Combo

FUEL

- 25 Gallon transom

2585

2385

2185

1985

CR

CR II

QL

ELW

CCF

QF

RF

GS	Length Class	Boat Length Overall	Deck Length	Pontoon Diameter	Width	Dry Weight	Max Weight Capacity	Max Persons Pounds	Max Number Persons	Max Engine HP
1985 23"	19	19' 5"	19' 3"	23"	8.5'	1650	1610	1050	8	75
1985 25" EP	19	19' 5"	19' 3"	25" X 3	8.5'	1880	1750	1225	9	90
1985 25" SP	19	20' 6"	19' 3"	25" X 3	8.5'	2050	2155	2255	10	115
1985 25" WG	19	20' 6"	19' 3"	25" X 3	8.5'	2050	2255	2255	10	115
2185 25"	21	21' 5"	21' 3"	25"	8.5'	1850	2035	1300	10	115
2185 25" EP	21	21' 5"	21' 3"	25" x 3	8.5'	2040	2035	1300	10	115
2185 25" SP	21	22' 6"	21' 3"	25" x 3	8.5'	2750	2240	1300	10	175
2185 25" WG	21	22' 6"	21' 3"	25" x 3	8.5'	2750	2240	1300	10	175
2385 25"	23	23' 5"	23' 3"	25"	8.5'	2150	2150	1540	11	125
2385 25" EP	23	23' 5"	23' 3"	25" x 3	8.5'	2450	2150	1540	11	115
2385 25" SP	23	24' 6"	23' 3"	25" x 3	8.5'	2800	2582	1768	12	200
2385 25" WG	23	24' 6"	23' 3"	25" x 3	8.5'	2900	2560	1600	12	250
2385 27" WG	23	24' 6"	23' 3"	27" x 3	8.5'	3050	2980	1890	13	250
2585 25"	25	25' 5"	25' 3"	25"	8.5'	2450	2430	1770	13	135
2585 25" EP	25	25' 5"	25' 3"	25" x 3	8.5'	2650	2650	1790	13	115
2585 25" SP	25	26' 6"	25' 3"	25" x 3	8.5'	3000	2877	2063	14	200
2585 25" WG	25	26' 6"	25' 3"	25" x 3	8.5'	3100	2825	2015	14	250
2585 27" WG	25	26' 6"	25' 3"	27" x 3	8.5'	3200	3270	2460	17	350



VENTURE | Cruise



2080 CR



VENTURE | Cruise Rear Bench



2280 CRB (Shown with Optional 2000 Series Furniture)



2280 CRB (Shown with Optional Blackout Package)



VENTURE | Quad Lounge



2280 QL (Shown with Optional 2000 Series Furniture)



2280 QL

VENTURE | Fish-N-Cruise



2280 FNC



2280 FNC

VENTURE | Cruise Bow Fish



2080 CRBF



VENTURE | Bow Fish



1475 BF



VENTURE | Quad Fish & Rear Fish



1880 QF



1880 RF





STANDARD FEATURES & SPECIFICATIONS

HELM

- Cadet 2 Roto Helmstand
- Tach, Volt, Fuel Gauges
- 12 Volt Power Point
- Bronze Sound Package, Fusion RA-55 Radio, (4) Fusion EL Speakers, (4) Fusion EL Speaker Grills
- Viper Steering Wheel
- Removeable Windshield
- Courtesy Light on Helmstand

INTERIOR

- Sport Low Back Drivers Chair
- Chair Adjustment Slider, Front, Back, Rotate
- Riptide, (Shadow or Dune) Vinyl Rear Deck with Deco Carpet on Remainder
- USB Charging Ports
- Stainless Steel Cup Holders
- Greywood Small Kidney Thermoform Table
- Lifetime Aluminum Seat Frames w/ Flow-Through Ventilation
- Matrix 50 Primary Seat Vinyl
- Seat Frame Cladding color matched to primary seat vinyl
- Suspension Seating
- Lounge Arms with Storage (based on floorplans)
- Vinyl Non-skid Strips for Entry Gates
- Trash Can -Small - Built In (where possible)

EXTERIOR

- .040 Heritage External Lock Stripped Smooth Wall panels
- 7.5' or 8' wide Bimini Top with 1 1/4" Square Anodized Aluminum Frame SST Quick Release Bimini Mounts & Transport Position Brackets
- USCG Navigation Lights
- Flat Graphic Logos
- Gates w/ Lift n Lay hinge
- Rear Aluminum Ladder

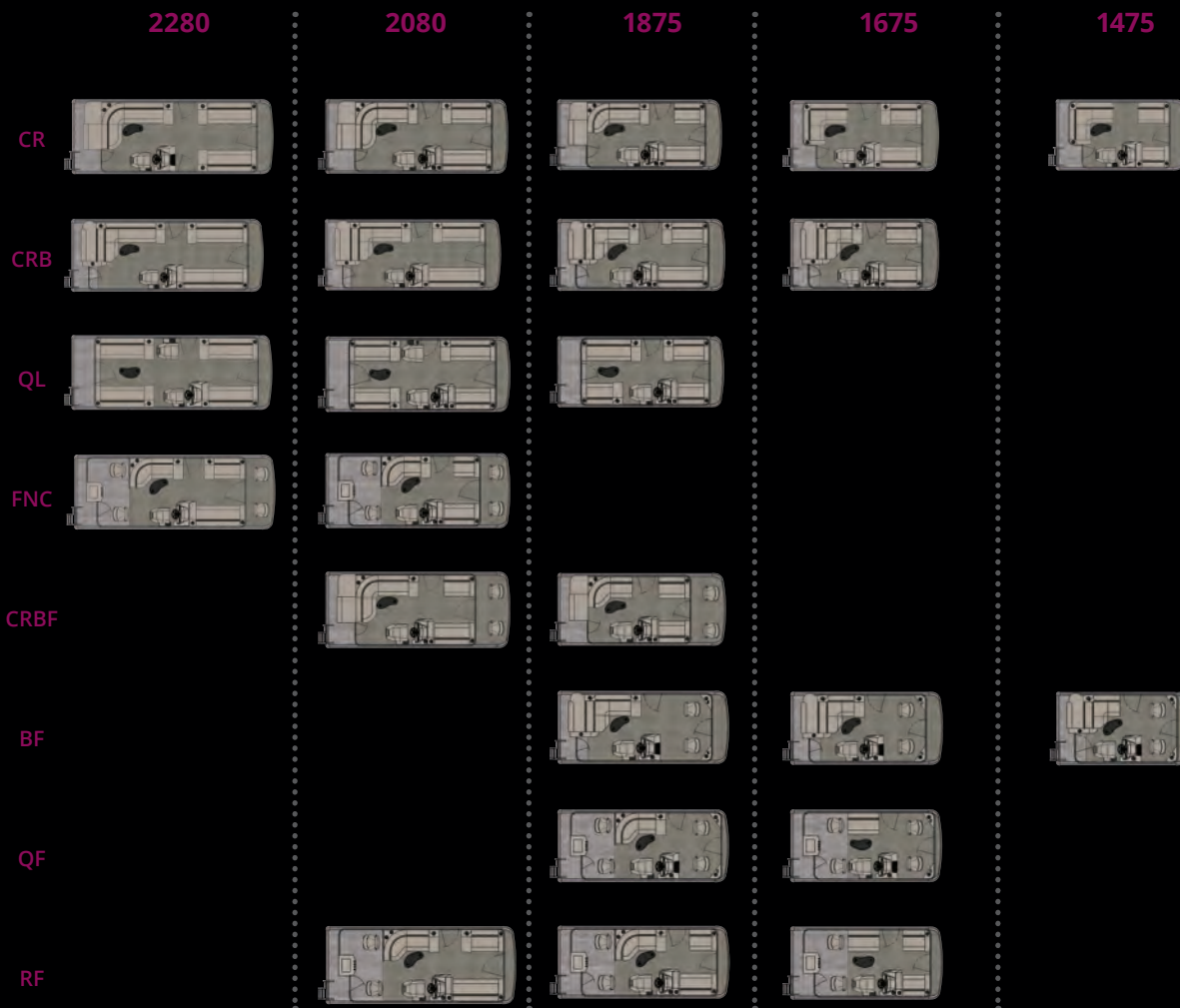
FISHING

- Livewell in Bench (Std on BF & CRBF only)
- Rear Fishing Center with Rod Holders & Livewell (FNC, QF & RF Only)

HULL

- 2 - 23" Diameter Pontoons
- Deck Corner impact protection -Aluminum
- Tapered Front Deck
- Pontoon Double Full Risers
- 3" Rub Rail with Black Rubber Insert
- 4 Stainless U bolt & Cleat Combo

FUEL SYSTEM OPTIONAL



LS	Length Class	Boat Length Overall	Deck Length	Pontoon Diameter	Width	Dry Weight	Max Weight Capacity	Max Persons Pounds	Max Number Persons	Max Engine HP
1475	14	15' 5"	14'	23"	7.5'	1150	1170	800	5	40
1475 X 3 23" CP	14	16' 6"	14'	23" x 3	7.5'	1400	1360	840	6	60
1675	16	17' 5"	16'	23"	7.5'	1350	1350	950	6	50
1675 X 3 23" CP	16	18' 6"	16'	23" x 3	7.5'	1600	1650	1100	8	75
1875	18	19' 5"	18'	23"	7.5'	1600	1575	1050	7	75
1875 X 3 23" CP	18	20' 6"	18'	23" x 3	7.5'	1875	1850	1290	9	100
2080	20	21' 5"	20'	23"	8'	1750	1805	1250	9	90
2080 X 3 23" CP	20	22' 6"	20'	23" x 3	8'	2150	2080	1400	10	135
2080 X 3 25" SP	20	22' 6"	20'	25" x 3	8'	2200	2370	1710	12	175
2280	22	23' 5"	22'	23"	8'	2000	2000	1450	10	100
2280 X 3 25" SP	22	24' 6"	22'	25" x 3	8'	2800	2582	1768	12	200
2280 X 3 25" WG	22	24' 6"	22'	25" x 3	8'	2800	2580	1780	12	250



VLS | Quad Lounge



2080 QL (Shown with Optional Platinum Edition Upgrade)



1880 CR (Shown with Optional Limited Edition Upgrade)



VTX | Quad Fish



1880 QF



STANDARD FEATURES & SPECIFICATIONS

HELM

- Cadet 2 Roto Helmstand
- Tach, Volt, Fuel Gauges
- 12 Volt Power Point
- Bronze Sound Package, Fusion RA-55 Radio, (4) Fusion EL Speakers, (4) Fusion EL Speaker Grills
- Viper Steering Wheel
- Mechanical Tilt Steering
- Removeable Windshield
- Courtesy Light on Helmstand

INTERIOR

- Sport Low Back Drivers Chair
- Chair Adjustment Slider, Front, Back, Rotate
- Riptide, (Shadow or Dune) Full Vinyl Deck
- USB Charging Ports
- Stainless Steel Cup Holders
- Greywood Small Kidney Thermoform Table
- Lifetime Aluminum Seat Frames w/ Flow-Through Ventilation
- Matrix 50 Primary Seat Vinyl
- Seat Frame Cladding color matched to primary seat vinyl
- Suspension Seating
- Lounge Arms with Storage (based on floorplans)
- Vinyl Non-skid Strips for Entry Gates
- Trash Can -Small - Built In (where possible)

EXTERIOR

- .040 External Lock Stripped Smooth Wall panels
- 8' wide Bimini Top with 1 1/4" Square Anodized Aluminum Frame SST Quick Release Bimini Mounts & Transport Position Brackets
- USCG Navigation Lights
- Flat Graphic Logos
- Gates w/ Lift n Lay hinge
- Rear Aluminum Ladder
- Playpen Cover

HULL

- 2 - 25" Diameter Pontoons
- Deck Corner impact protection -Aluminum
- Tapered Front Deck
- Pontoon Double Full Risers
- 3" Rub Rail with Black Rubber Insert
- 4 Stainless U bolt & Cleat Combo

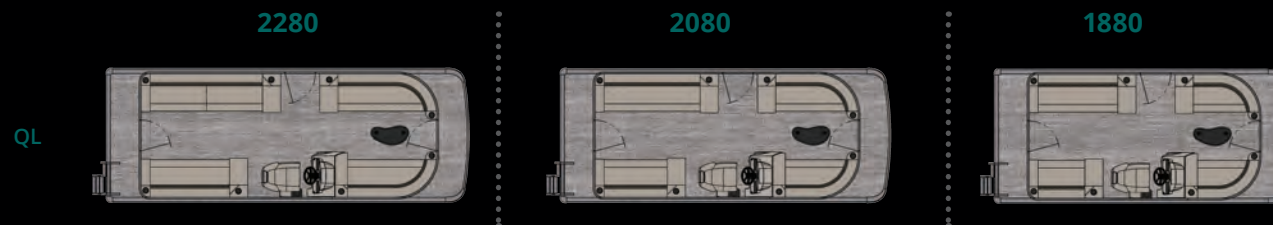
FUEL

- 25 Gallon transom

FISHING - VTX ONLY

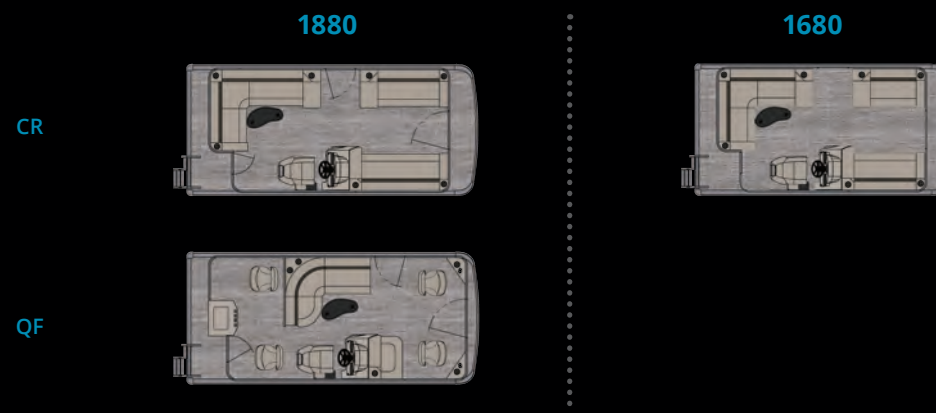
- Rear Fishing Center with Rod Holders & Livewell (QF Only)
- Helmstand Livewell with Seat Cushions (QF Only)

VLS



VLS	Length Class	Boat Length Overall	Deck Length	Pontoon Diameter	Width	Dry Weight	Max Weight Capacity	Max Persons Pounds	Max Number Persons	Max Engine HP
1880 25"	18	19'5"	18'	25"	8'	1650	1835	1475	10	90
2080 25"	20	21'5"	20'	25"	8'	1800	2035	1380	10	115
2280 25"	22	23'5"	22'	25"	8'	2050	2260	1600	11	125

VTX



VTX	Length Class	Boat Length Overall	Deck Length	Pontoon Diameter	Width	Dry Weight	Max Weight Capacity	Max Persons Pounds	Max Number Persons	Max Engine HP
1680 25"	16	17'5"	16'	25"	8'	1425	1580	1050	7	60
1880 25"	18	19'5"	18'	25"	8'	1650	1835	1475	10	90





GALLERY OF FEATURES & OPTIONS

			EXCALIBUR	CATALINA PLATINUM	CATALINA	LSZ	GS	VENTURE	VLS	VTX
HELMSTANDS	Commander w/Touchscreen	H1	S	OW	•	•	•	•	•	•
	Commander w/Analog Gauges	H2	O	W	•	•	•	•	•	•
	Commander	H3	•	O	O	•	•	•	•	•
	Ensign 2	H4	•	S	S	•	•	•	•	•
	Ensign 2 w/Smart 80 Touchscreen	H5	•	O	O	•	•	•	•	•
	Crew	H6	•	•	•	S	•	•	•	•
	Crew Fiberglass	H7	•	•	•	O	•	•	•	•
	Crew with Smart 80 Medallion	H8	•	•	•	O	•	•	•	•
	Cadet 2	H9	•	•	•	•	S	S	S	S
	Cadet 2 Fiberglass	H10	•	•	•	•	O	O	O	O
	Cadet W	H11	•	•	•	W	W	•	•	•
	Cadet W Fiberglass	H12	•	•	•	•	CF	•	•	•
	Center Console	H13	•	•	•	•	•	•	•	•
FURNISHINGS	Raised Platform for Ensign 2 Stand	H13	•	O	O	•	•	•	•	•
	5000 Series Matrix 50 Ultrafine	FN1	S	S	•	•	•	•	•	•
	5000 Series Matrix 50 Ultrafine DETAIL	FN2	S	S	•	•	•	•	•	•
	4000 Series Matrix 50	FN3	•	•	S	O	•	•	•	•
	4000 Series Matrix 50 DETAIL	FN4	•	•	S	O	•	•	•	•
	2000 Series Matrix 50	FN5	•	•	•	S	O	O	•	•
	2000 Series Matrix 50 DETAIL	FN6	•	•	•	S	O	O	•	•
	1000 Series Matrix 50	FN7	•	•	•	•	S	S	S	S
	1000 Series Matrix 50 DETAIL	FN8	•	•	•	•	S	S	S	S

S = Standard

O = Option

• = Not Available

W = Standard on Windshield Model

OW = Option on Windshield Model Only

OSW = Option But Standard on Windshield Model

CF = Center Console Fish Only

= Standard Equipment on Triple Pontoon Models

FS = Standard on Funship Model

TS = Includes Touchscreen Compatible 742 GPS

OV = Option but Standard on VRL & VRB Floorplans

SF = Standard Depending on Floorplan

F = Standard on Fish Models Only

OF = Option on Fish Models Only

OFS = Option on Funship Only

SXF = Standard Except Funship

OXF = Option Except Funship

SE = Standard on Entertainer

ELW = Elite Windshield

QF = Quad Fish

O* = Option Depending on Floorplan



H1



H2



H7



H8



H13



FN1



FN6



FN7



H3



H4



H5



H6



H9



H10



H11



H12



FN2



FN3



FN4



FN5



FN8





GALLERY OF FEATURES & OPTIONS

		EXCALIBUR	CATALINA PLATINUM	CATALINA	LSZ	GS	VENTURE	VLS	VTX
CHAIRS	Deluxe Admiral w/Adjustment Levers	CH1	S	S	*	*	*	*	*
	Admiral w/Standard Adjustment	CH2	*	*	O	O	O	*	*
	Admiral w/Bolster	CH3	O	O	O	O	O	*	*
	Commander	CH4	*	*	S	O	O	*	*
	King	CH5	O	O	O	O	O	*	*
	Sport High Back w/Arms	CH6	*	O	*	O	O	*	*
	Sport Low Back w/Arms	CH7	*	*	*	S	O	*	*
	Sport Low Back	CH8	*	*	*	S	S	S	S
	Fishing	CH9	*	*	F	F	F	*	F
	Adjustable Height Pedestal		S	S	O	O	O	*	*
FURNISHING FEATURES	Moveable Cup Holder - Deco	FNF1	S	S	O	O	O	*	*
	Moveable Cup Holder - SST Cups	FNF2	O	O	S	O	O	*	*
	Bow Filler Bench	FNF3	O	O	O	O	*	*	*
	Ottoman Cooler	FNF4	O	O	O	O	O	*	*
	Floor Matting Under Bench	FNF5	S	S	O	O	O	*	*
	Deco Seat Cladding	FNF6	S	S	S	S	O	*	*
	Base Color Matched Seat Cladding	FNF7	*	*	*	S	S	S	S
	SST Vent Covers for Seat Cladding	FNF8	S	S	O	O	O	*	*
	Privacy Curtain & Frame In Lounge Arm	FNF9	SF	SF	SF	O	O	*	*
	Privacy Curtain & Frame	FNF10	SF	SF	SF	O	O	O	O
	Trash Can Built In	FNF11	SF	SF	SF	O	*	*	*
STEERING	Baystar Hydraulic		*	O	FS	O	O	O	O
	Seastar Hydraulic		S	O #	O	O	O	*	*
	Power Assist Steering		O	O	O	O	O	*	*
	Mazzo Steering Wheel	ST1	S	S	O	O	O	*	*
	Black Soft-Grip Steering Wheel w/Chrome Spokes	ST2	*	*	S	O	O	O	O
	Black Soft-Grip Steering Wheel	ST3	*	*	*	S	O	*	*
	Viper Steering Wheel	ST4	*	*	*	S	S	S	S
TABLES	Small Greywood Curved Table	T1	*	*	*	*	S	S	S
	Large Heavy Duty Curved Greywood Table w/Phone Storage	T2	O	SF	SF	SF	O	*	*
	Large Heavy Duty Rectangle Greywood Table w/Phone Storage	T3	S	SF	SF	SF	O	*	*
ENTERTAINMENT	Bistro Booth Seating w/Lighted Table	E1	*	SE	O	*	*	*	*
	Bar w/Built In Cooler and Bar Stools	E2	*	*	SE	*	*	*	*
	Stationary Bar Table	E3	*	*	*	SE	*	*	*
	Port Rear Fiberglass Prep Center w/Sink	E4	*	SE	SE	*	*	*	*
	Port Rear Fiberglass Prep Center w/Refrigerator & Sink	E5	ELW	ELW	*	*	*	*	*
	Port Rear Prep Center w/Built In Cooler & Sink	E6	*	*	*	ELW	*	*	*

S = Standard
 O = Option
 * = Not Available
 W = Standard on Windshield Model
 OW = Option on Windshield Model Only
 OSW = Option But Standard on Windshield Model
 CF = Center Console Fish Only

= Standard Equipment on Triple Pontoon Models
 FS = Standard on Funship Model
 TS = Includes Touchscreen Compatible 742 GPS
 OV = Option but Standard on VRL & VRB Floorplans
 SF = Standard Depending on Floorplan
 F = Standard on Fish Models Only
 OF = Option on Fish Models Only

OFS = Option on Funship Only
 SXF = Standard Except Funship
 OXF = Option Except Funship
 SE = Standard on Entertainer
 ELW = Elite Windshield
 QF = Quad Fish
 O* = Option Depending on Floorplan



CH1



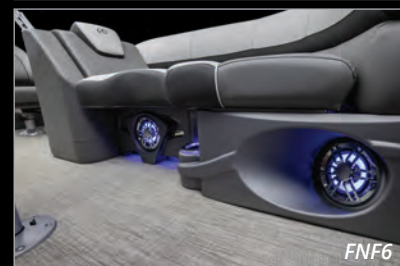
CH2



CH8



CH9



FNF6



FNF7



ST2



ST3



E2



E3





GALLERY OF FEATURES & OPTIONS

		EXCALIBUR	CATALINA PLATINUM	CATALINA	LSZ	GS	VENTURE	VLS	VTX
ELECTRONICS	Bronze Lite Sound Package: Fusion RA-55 Radio, (2) Fusion EL Speakers, (2) Fusion EL Speaker Grills	EL1	•	•	•	S	•	•	•
	Bronze Sound Package: Fusion RA-55 Radio, (4) Fusion EL Speakers, (4) Fusion EL Speaker Grills	EL2	•	•	•	O	S	S	S
	Bronze Plus Sound package: Fusion RA-55 stereo, (6) EL speakers, 4-channel amp	EL3	•	•	•	O	O	•	•
	Silver Sound Package: Fusion RA-210 Radio (4) Fusion EL Speakers (4) Fusion EL Speaker Grills, USB Audio Input and Charge	EL4	•	•	•	S	•	•	•
	Silver Plus Sound Package: (6) Fusion EL Speakers & Grills, Fusion 4-Channel Amp, Fusion RA-210 Radio, USB Audio Input and Charge	EL5	•	•	•	O V	•	•	•
	Gold Sound Package: Fusion RA-670 Radio, (4) Fusion XS Speakers, (4) Fusion XS Speaker Grills. USB Audio Input and Charge	EL6	•	•	S	•	•	•	•
	Gold Plus sound Package: Fusion RA-670 Radio, (6) Fusion XS LED Lighted blue Speakers & Grills, Fusion 5-Channel Amp, USB Audio Input and Charge	EL7	•	S	O V	•	•	•	•
	EXGT Sound Package: Medallion Touch screen stereo (6) CL-655 Lighted RGB Speakers & Grills, Fusion 6-Channel Amp, USB Audio Input and Charge		S	•	•	•	•	•	•
	High Performance Sound Package: Fusion RA-670 receiver, (6) blue lighted XS speakers, 5-channel amp, 10" subwoofer & USB audio input and charge	EL8	•	O	O	O	O	•	•
	PREMIUM Sound Package Fusion RA-770 Radio, (6) CL-655 Lighted Speakers, 6-Channel Amp, Fusion D Mono Block Digital Amp, 10" Subwoofer, USB Audio Input and Charge	EL9	O	O	O	O	O	•	•
LIGHTING	Smart 80 Touchscreen (Left in photo)	EL10	•	O	O	•	•	•	•
	Garmin 742 (Right in photo)	EL10	S	O	O	•	•	•	•
	Garmin 73 CV GPS	EL11	TS	OSW	O	O	O	•	•
	Garmin 5CV Fish/Depth	EL12	•	S	F	O	O	•	•
	Vee Three Depth Gauge	EL13	•	•	O	O	O	•	•
	Dual USB Switch	EL14	S	S	S	O	O	•	•
	USB Ports (Located in Furniture)	EL15	S	S	S	S	S	S	S
	USB/AUX Combined Input	EL16	S	S	S	S	•	•	•
	RGB Interior Light Package	L1	S	O	O	O	O	•	•
	RGB Interior & Exterior Light Package	L2	S	O	O	O	O	•	•
	Blue Ice Interior Light Package	L3	•	S	O	O	O	•	•
	Blue Interior Mood Lights	L4	•	S	O	O	O	O	O
	Blue Under Rubrail Lights	L5	•	O	O	O	O	•	•
	Rear Underwater Lights	L6	S	O	O	O	O	•	•
	Lighted Chrome Air Vents	L7	•	•	O	•	•	•	•
	Lighted Blackout Air Vents	L8	•	•	O	•	•	•	•
	Lighted Fixed Cup Holders - Upgrade Set	L9	S	S	O	O	O	•	•
	EGT Docklights	L10	S	•	•	•	•	•	•
	Deco Built In Docklights	L11	•	S	O	•	•	•	•
	LED Accent Built In Chrome Docklights	L12	•	•	O	O	•	•	•
	LED Accent Built In Blackout Docklights	L13	•	•	O	O	•	•	•
	90° Chrome Built In Docklights	L14	•	•	•	•	O	•	O
	Black 90° Chrome Built In Docklights		•	•	•	•	O	•	•
	Chrome Wall Mount Nav/Dock Light	L15	•	•	S	O	O	O	•

S = Standard

O = Option

• = Not Available

W = Standard on Windshield Model

OW = Option on Windshield Model Only

OSW = Option But Standard on Windshield Model

CF = Center Console Fish Only

= Standard Equipment on Triple Pontoon Models

FS = Standard on Funship Model

TS = Includes Touchscreen Compatible 742 GPS

OV = Option but Standard on VRL & VRB Floorplans

SF = Standard Depending on Floorplan

F = Standard on Fish Models Only

OF = Option on Fish Models Only

OFS = Option on Funship Only

SXF = Standard Except Funship

OXF = Option Except Funship

SE = Standard on Entertainer

ELW = Elite Windshield

QF = Quad Fish

O* = Option Depending on Floorplan



EL1



EL2



EL8



EL9



EL15



EL16



L6



L7



L13



L14



EL3



EL4



EL5



EL6



EL7



EL10



EL11



EL12



EL13



EL14



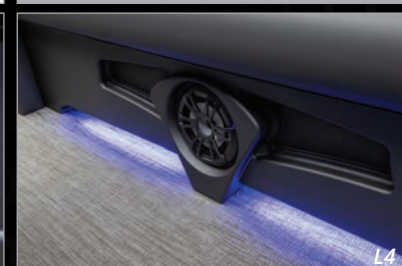
L1



L2



L3



L4



L5



L8



L9



L10



L11



L12



L15





GALLERY OF FEATURES & OPTIONS

			EXCALIBUR	CATALINA PLATINUM	CATALINA	LSZ	GS	VENTURE	VLS	VTX
TOPS	Bimini Top - D-Rail Anodized Frame	TP1	•	SXF	•	•	•	•	•	•
	Bimini Top - D-Rail Blackout Frame	TP2	S	OXF	•	•	•	•	•	•
	Bimini Top - 1-1/4" Square Anodized Frame	TP3	•	•	SXF	S	S	S	S	S
	Bimini Top - Blackout 1-1/4" Square Anodized Frame	TP4	•	•	OXF	O	O	O	•	•
	Bimini Top - Electric (Rear Only)	TP5	O	OXF	OXF	O	O	•	•	•
	Bow Mount Bimini Top - 1-1/4" (Matches Rear Frame)	TP6	O	O	O	O	O	O*	•	•
	Bimini Top for Funship Roof	TP7	•	OFS	OFS	•	•	•	•	•
	Deco Uprights for Funship Roof	TP8	•	OFS	•	•	•	•	•	•
CANVAS	Full Mooring Cover	CV1	S	S	O	O	O	•	•	•
	Playpen Cover	CV2	•	•	•	•	•	O	S	S
	Seat Covers	CV3	O	O	O	O	O	O	•	•
	Full Camper Enclosure	CV4	•	O	O	O	O	•	•	•
	Half Camper Enclosure	CV5	•	O	O	O	O	•	•	•
	Half Enclosure - Clear (for GX Tower)	CV6	O	•	•	•	•	•	•	•
FISHING	Helmstand Livewell	F1	•	•	QF	•	•	•	•	QF
	Large Rear Fishing Center w/Livewell	F2	•	•	F	F	F	•	•	•
	Small Rear Fishing Center w/Livewell	F3	•	•	•	•	•	SF	•	F
	Livewell Under Bench	F4	O	O	O	O	O	CRBF	•	•
	Baitwell Under Bench	F5	•	•	•	•	•	BF	•	•
	Extra Large Livewell/Baitwell Combo	F6	•	•	OF	OF	OF	•	•	•
	Rod Box	F7	•	•	OF	OF	CF, OF	•	•	•
	Built In Tackle Trays	F8	•	•	F	•	CF	•	•	•
	Sink w/External Water Supply	F9	•	•	F	•	CF	•	•	•
MISC.	Gas Grill	MS1	O	O	O	O	O	O	•	•
	Wash Down Kit	MS2	O	O	O	O	O	O	•	•
	Extended Rear Patio Pad	MS3	O	O	O	O	O	O	•	•
	Side Protector Keels	MS4	S	S	O	O	O	O	•	•
	Ladder SST Telescoping	MS5	S	S	S	S	F	•	•	•
	Ladder Aluminum Anodized 4 Step	MS6	•	•	•	•	S	S	S	S
	Pull Up SST Cleats	MS7	S	S	O	O	O	O	•	•
	Solid Bottom Keels	MS8	O	O	O	O	O	O	•	•
	Composite Interior Wall Covers	MS9	S	S	SF	•	•	•	•	•
	Blackout Walls, Rubrail, Corners, & Top Frame	MS10	O	O	O	O	O	O	•	•
	In Floor Storage	MS11	O	O	O	O	O	O*	•	•
	VRB Gate Aft		•	S	O	O	•	•	•	•

S = Standard
 O = Option
 • = Not Available
 W = Standard on Windshield Model
 OW = Option on Windshield Model Only
 OSW = Option But Standard on Windshield Model
 CF = Center Console Fish Only

= Standard Equipment on Triple Pontoon Models
 FS = Standard on Funship Model
 TS = Includes Touchscreen Compatible 742 GPS
 OV = Option but Standard on VRL & VRB Floorplans
 SF = Standard Depending on Floorplan
 F = Standard on Fish Models Only
 OF = Option on Fish Models Only

OFS = Option on Funship Only
 SXF = Standard Except Funship
 OXF = Option Except Funship
 SE = Standard on Entertainer
 ELW = Elite Windshield
 QF = Quad Fish
 O* = Option Depending on Floorplan



TP1



TP2



TP8



CV1



F1



F2



F8



F9



MS6



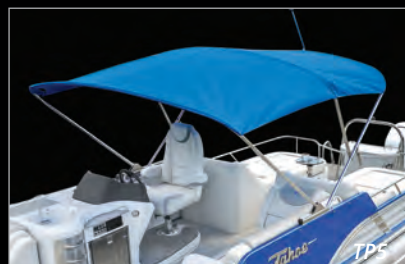
MS7



TP3



TP4



TP5



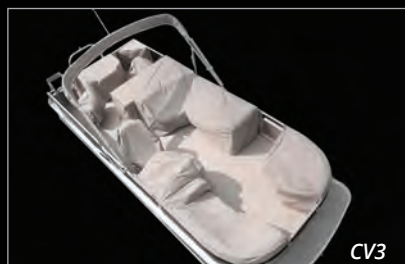
TP6



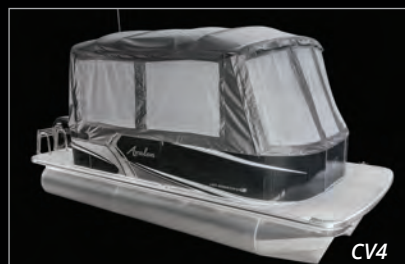
TP7



CV2



CV3



CV4



CV5



CV6



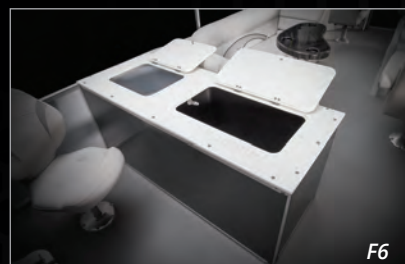
F3



F4



F5



F6



F7



MS1



MS2



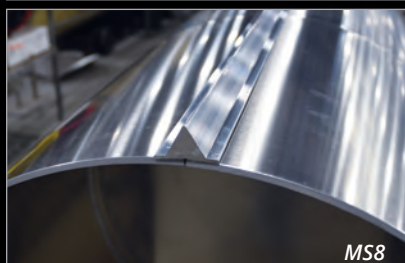
MS3



MS4



MS5



MS8



MS9



MS10



MS11





GALLERY OF FEATURES & OPTIONS | Performance & Watersports



PP1

25" EXPRESS PONTOON PACKAGE

Recommended for those desiring a 115 HP or less equipped boat with increased wave and weight handling as well as improved speed. Includes only two fins on the center pontoon, standard motor pod, wave shield and BayStar hydraulic steering (does not include a ski tow bar). **MAXIMUM HP RATING IS 115 HP.**



PP2

25" SPORT PERFORMANCE PONTOON PACKAGE

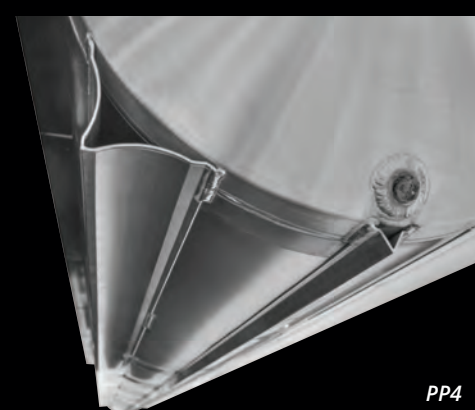
Recommended for those desiring an economical 150HP - 200 HP equipped boat with very good weight and wave handling as well as very good performance. Includes integrated motor pod, 38-gallon transom direct fill fuel tank, 4 lifting fins, wave shield and SeaStar hydraulic steering (does not include a ski tow bar). **MAXIMUM HP RATING IS 200 HP.**



PP3

25" OR 27" WAVEGLIDER PACKAGE

Recommended for those desiring maximum weight and wave handling, maximum speed and performance, maximum HP and maximum performance features. Includes integrated motor pod, 58-gallon built-in fuel tank, 6 lifting fins, wave shield, ski tow bar and SeaStar hydraulic steering.



PP4

			EXCALIBUR	CATALINA PLATINUM	CATALINA	LSZ	GS	VENTURE	VLS	VTX
TOWERS & TOW BARS	GX Electric Sport Tower	WS1	O	•	•	•	•	•	•	•
	Tower Decosport - Hinged (Manual)	WS2	O	O	O	O	O	•	•	•
	Arch Decosport - Fixed	WS3	O	O	O	O	O	•	•	•
	Arch or Tower Can Speakers	WS4	OT	OT	OT	OT	OT	•	•	•
	Ski Tow Bar Universal	WS5	S	O#	O#	O	O	O	•	•
PERFORMANCE PACKAGES	25" Express Pontoon Package	PP1	•	O	O	O	CF	O	•	•
	25" Sport Performance Pontoon Package	PP2	•	O	O	OSW	O	O	•	•
	25" Waveglider Package	PP3	•	OSW	O	O	O	O	•	•
	27" Waveglider Package	PP3	S	O, FS	O	O	O	O	•	•
	HPP Lifting Fins	PP4	S	O	O	O	O	O	•	•
	25" Transom	-	O	O, FS	O, FS	O	O	O	•	•

S = Standard
O = Option
• = Not Available
W = Standard on Windshield Model
OW = Option on Windshield Model Only
OSW = Option But Standard on Windshield Model
CF = Center Console Fish Only
OT = Optional with Tower

= Standard Equipment on Triple Pontoon Models
FS = Standard on Funship Model
TS = Includes Touchscreen Compatible 742 GPS
OV = Option but Standard on VRL & VRB Floorplans
SF = Standard Depending on Floorplan
F = Standard on Fish Models Only
OF = Option on Fish Models Only
SXF = Standard Except Funship

OXF = Option Except Funship
SE = Standard on Entertainer
ELW = Elite Windshield
QF = Quad Fish
O* = Option Depending on Floorplan
OFS = Option on Funship Only



WS1



WS2



WS3



WS4



WS5



GALLERY OF FEATURES & OPTIONS | Twin Engine



AMAZING SPEED, THE SMOOTHEST RIDE, & TWIN ENGINE DEPENDABILITY

Available on:

- Excalibur - All Floor Plans (Twin 450 requires Mercury Joystick Controls & 150gal Fuel Tank)
- Catalina Platinum 2585 & 2785 ENT, QL, RL, RJ & ELW (requires 27" Waveglider)

Includes:

- Twin Motor Mounts with Dual Pre Rig Controls
- Center Tube Step with Built in Ladder
- 4 Waveglider Lifting Fins for Maximum Twin Engine Turning
- 5 Year Structural Warranty

TWIN ENGINE CAPACITIES	Max Weight Capacity	Max Persons Pounds	Max Number Persons	Max Engine HP
2785 x 3 27" WG Twin	3190	1350	10	900
2785 x 3 27" WG Twin (RL)	3190	1350	10	700
2585 x 3 27" WG Twin	3150	1300	9	600





GALLERY OF FEATURES & OPTIONS | Colors

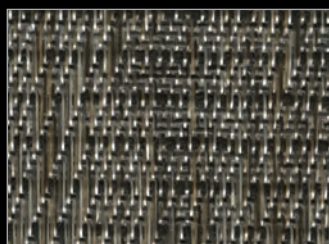
FLOORING



Seasmoke



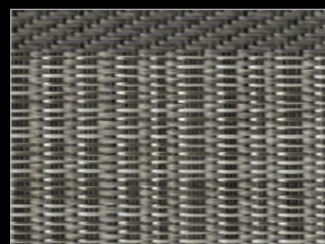
Timber



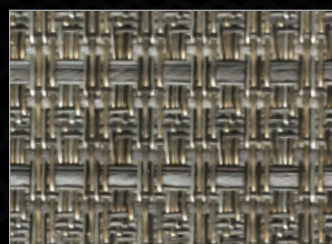
Driftwood



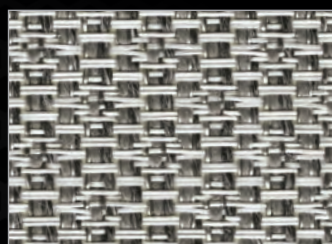
Natural Teak



Slate Teak



Luna Sand



Luna Pearl



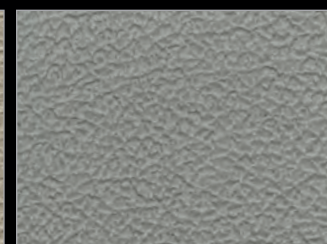
Riptide Dune



Riptide Shadow

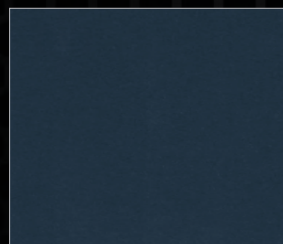


Taupe

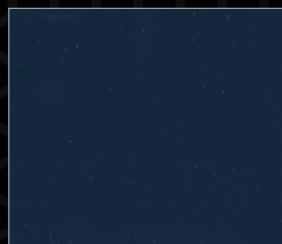


Gray

WALL COLORS (ALL MODELS)



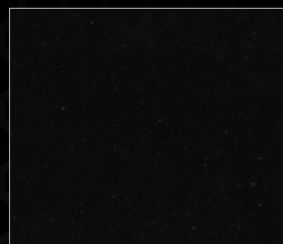
Steel Blue



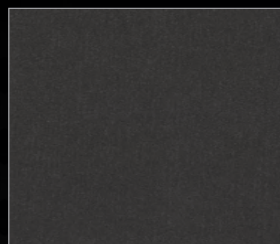
Blue



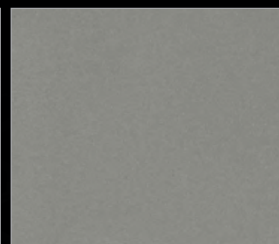
Caribbean Blue



Black



Charcoal



Silver



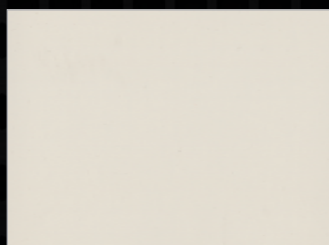
Sage Metallic



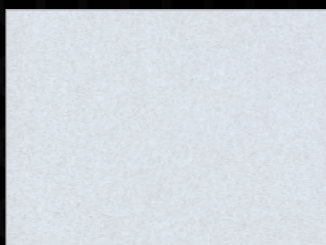
Bronze



Champagne



White



White Flake



Burgundy



Red

PRIMARY VINYL



Graphite

Silver

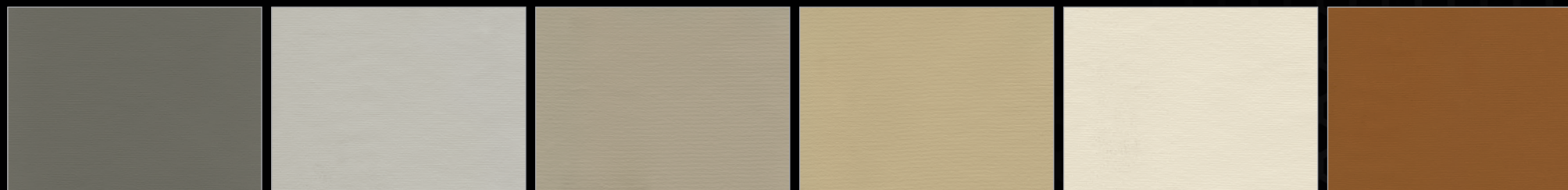
Buckskin

Conch Shell

White

Cognac

ULTRAFINE PRIMARY VINYL



Ultrafine Graphite

Ultrafine Silver

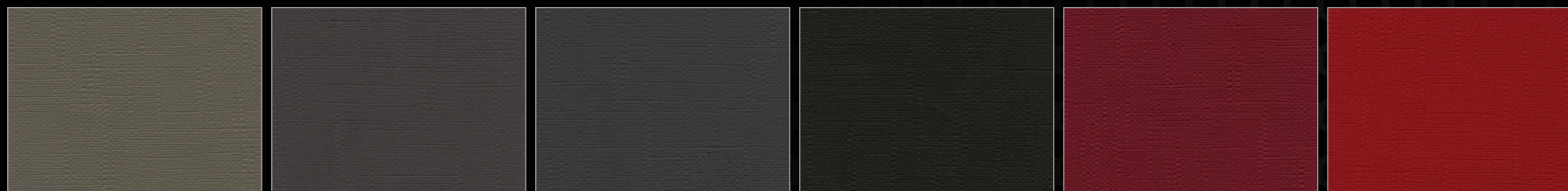
Ultrafine Buckskin

Ultrafine Conch Shell

Ultrafine White

Ultrafine Cognac

ACCENT VINYL



Neutra

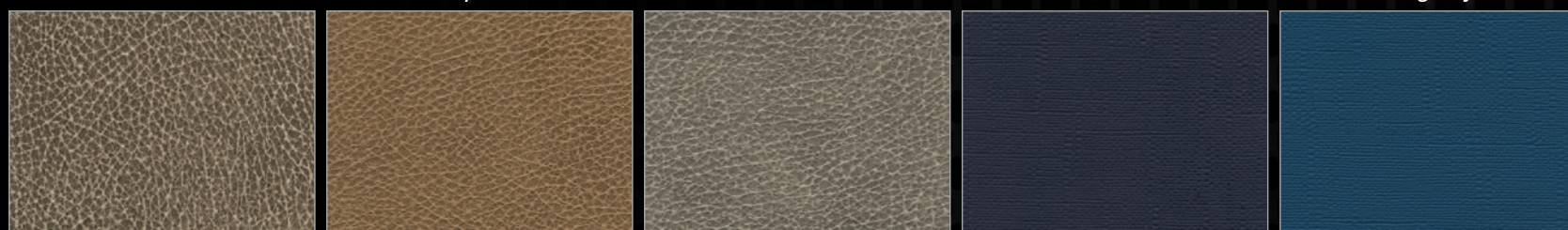
Topsail

Charcoal

Black

Burgundy

Red



Oak Barrel

Saddle

Beachwood

Indigo

Caribbean Blue





The NMMA-Certified label on an Avalon pontoon boat lets you know it was built to meet, and often exceed, the industry's strictest quality and safety standards for critical components, such as electrical systems, powering, flotation, fuel systems, and navigation lights. Certified boats must also pass rigorous annual inspections from independent third-party inspectors. According to U.S. Coast Guard statistics, NMMA-Certified boats have been shown to be safer than non-certified boats.

Avalon
LUXURY PONTON BOATS



A proud supporter of the
Travis Mills Foundation
foundation@travismills.org
"Never give up. Never quit."



Like us on
Facebook

www.facebook.com/AvalonPontoons



Avalon's exclusive MATRIX 50 heavy-duty 50-gauge marine seat coverings with a 24% substructure are tested strongest against tears, punctures and stains.

OFFICIAL AVALON MERCHANDISE
www.attoonshop.com

PURE *M*ICHIGAN®



903 Michigan Avenue, Alma, Michigan 48801
Toll Free: 800.334.2913 | 989.463.2112 | Fax: 989.463.8226
www.avalonpontoons.com

Dimensions, capacities, ratings, and additional specifications plus complete warranty and service information are available from your Avalon dealer. Product illustrations and data within this catalog are based upon information available at the time of publication. Avalon reserves the right to make changes without notice or obligation. Ask your local Avalon dealer for the most current product specifications prior to purchase. Some of the equipment shown separately or on products illustrated in this catalog may be optional at extra cost. All Avalon boats meet or exceed the standards established by the ABYC and USCG flotation, fuel systems, ventilation, electrical, and safety.



Avalon's superior innovation and customer satisfaction is recognized by the NMMA CSI AWARD for 2008 through 2020 and the Marine Industry 2012 Innovation Award!